



- 2016 -

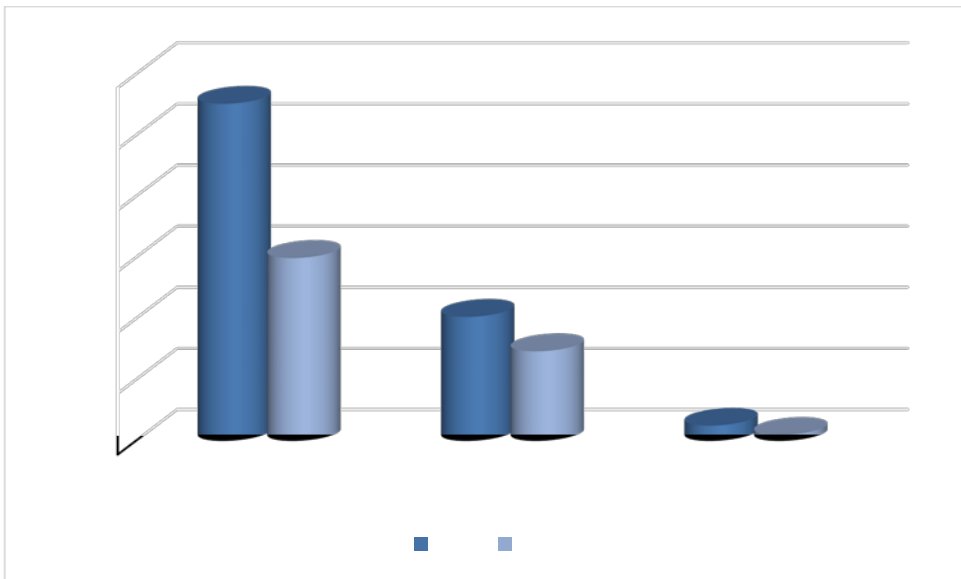
毕业生就业质量报告

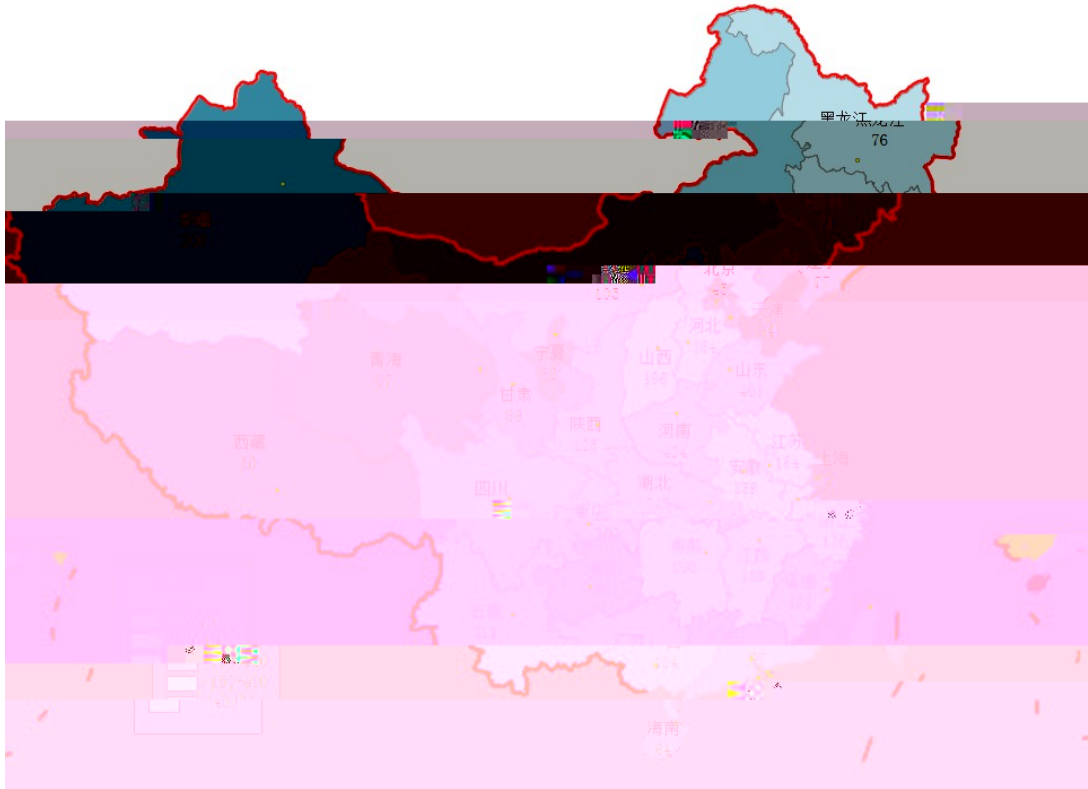
Report for employment quality of graduates

2016	1
	3
1.	4
1.1	4
1.2	5
2.	10
2.1	10
2.2	11
2.3	13
2.4	15
2.5	16
3.	18
3.1	18
3.2	18
3.3	19
3.4	19
3.5	20
4.	22
4.1	22
4.2	23
5.	30
5.1	30
5.2	33
	38

2016 6175 4254 19
59 1748 173 23

3898 2758 1015
125 2277 1496 733
48 1.7:1



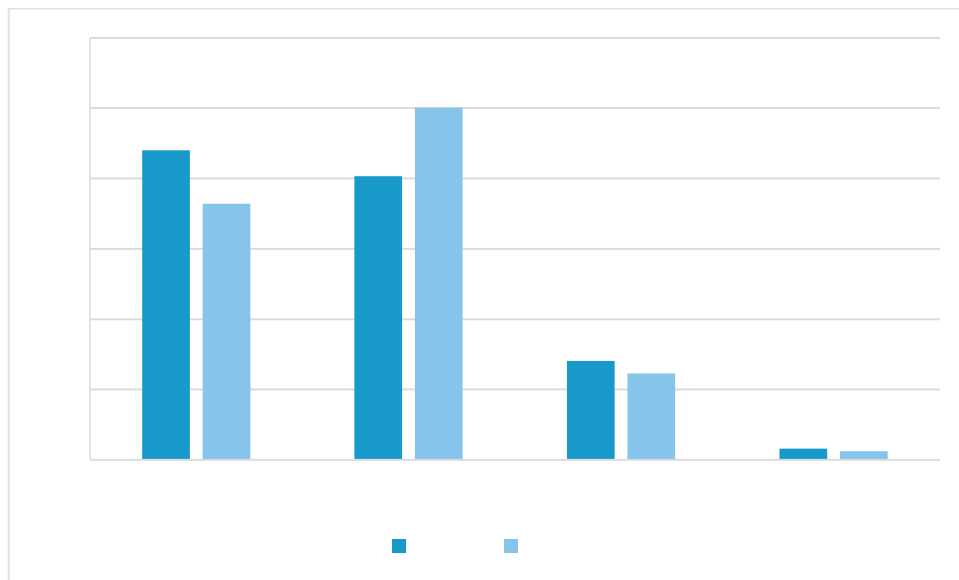


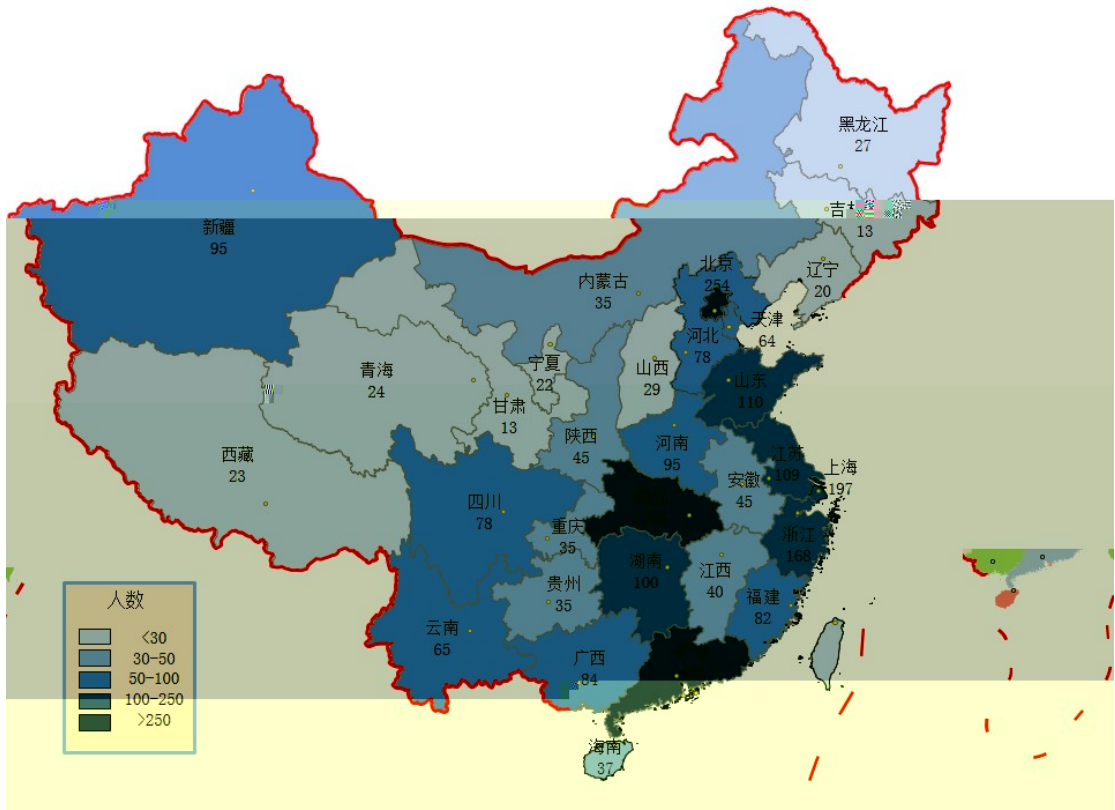
2016 12 20 2016 96.55%
 96.40% 96.62% 99.42%
 “ ”

1 2016

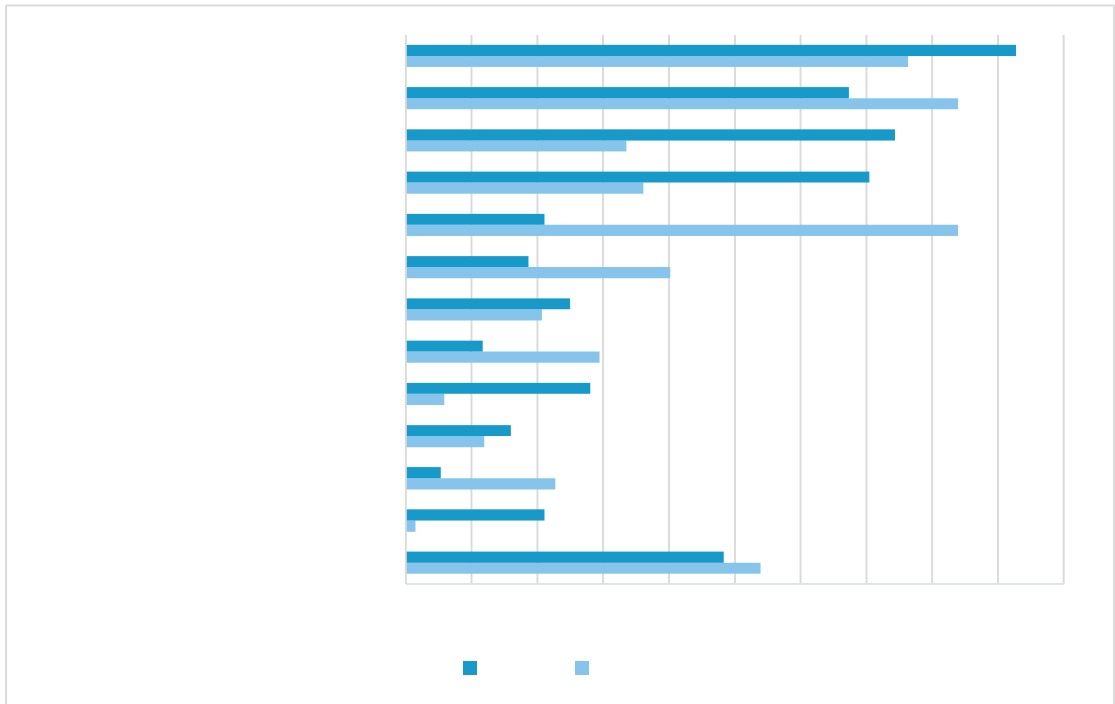
6175	96.55%	25.38%	3.84%	63.47%	0.66%	3.21%
4254	96.40%	33.99%	5.01%	52.73%	0.73%	3.95%
1748	96.62%	5.38%	1.20%	87.76%	0.57%	1.72%
173	99.42%	15.61%	1.73%	82.08%	0	0

1382		“985”	“211”	
		213		2
	94		21	
2		27		
	343	14.05%		
31				33.82%
	16.83%	6.31%	5.32%	4.01%
				211
12.30%			31	
		41.32%		11.07%
5.83%	4.08%	3.90%		





4



5

20 19

“ ” “ ” “ ” “

”

14.36%

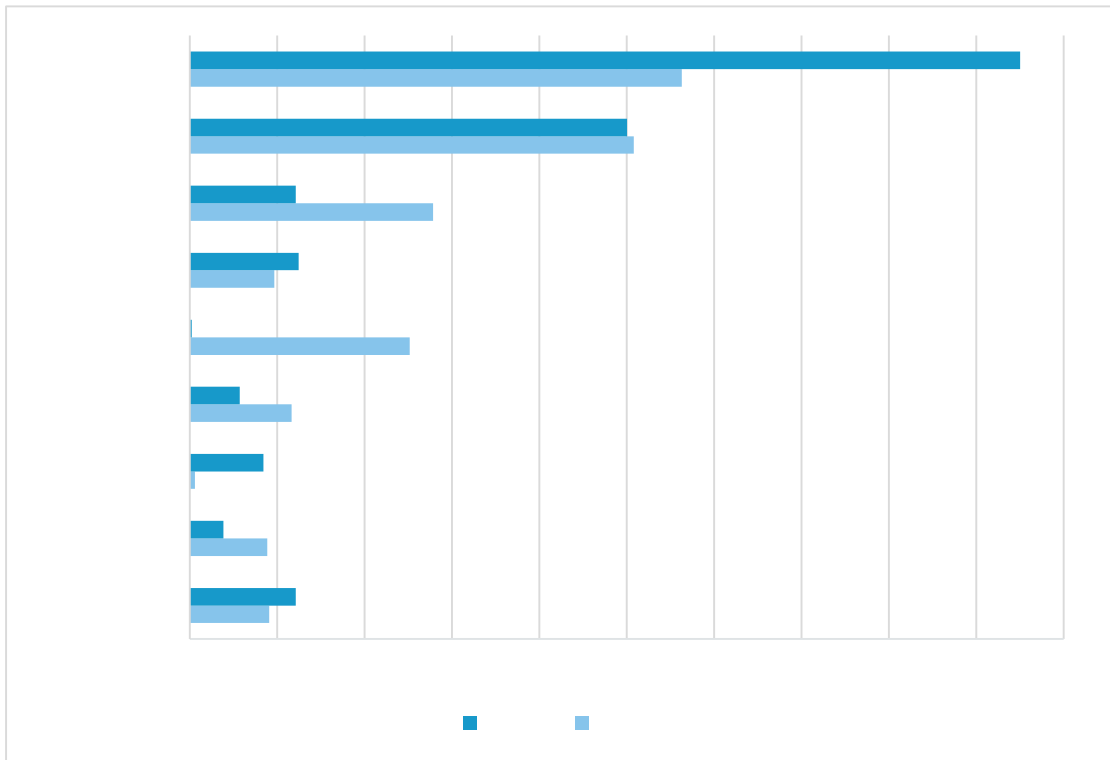
18.55%

14.86% 14.09% 13.47%

5.61% 5.00%

16.78 % 16.78 % 15.27 %

8.04% 7.23 % 6.70 %



6

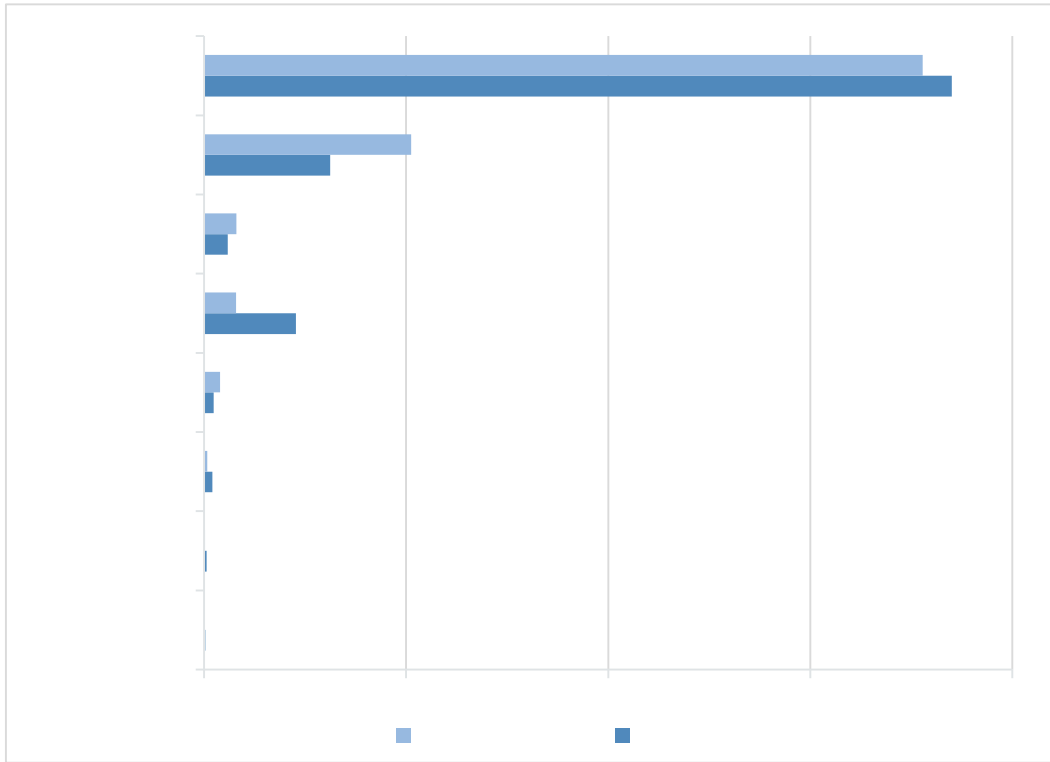
47.50% 25.02%

6.22% 6.06% 4.22% 2.87%

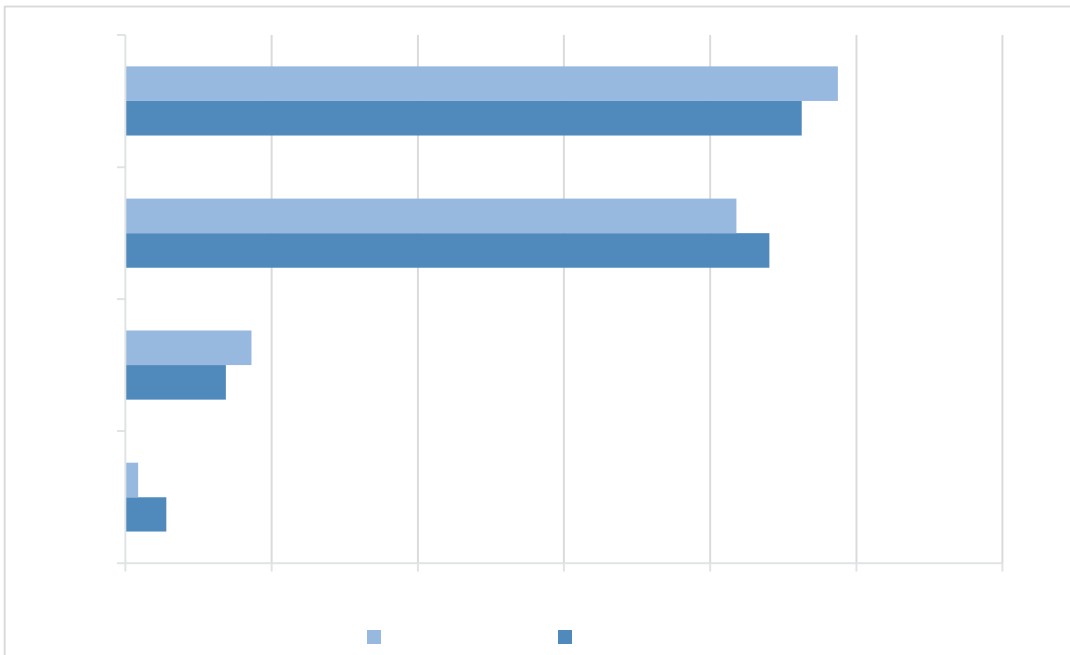
28.15 % 25.41%

13.93 % 12.59 %

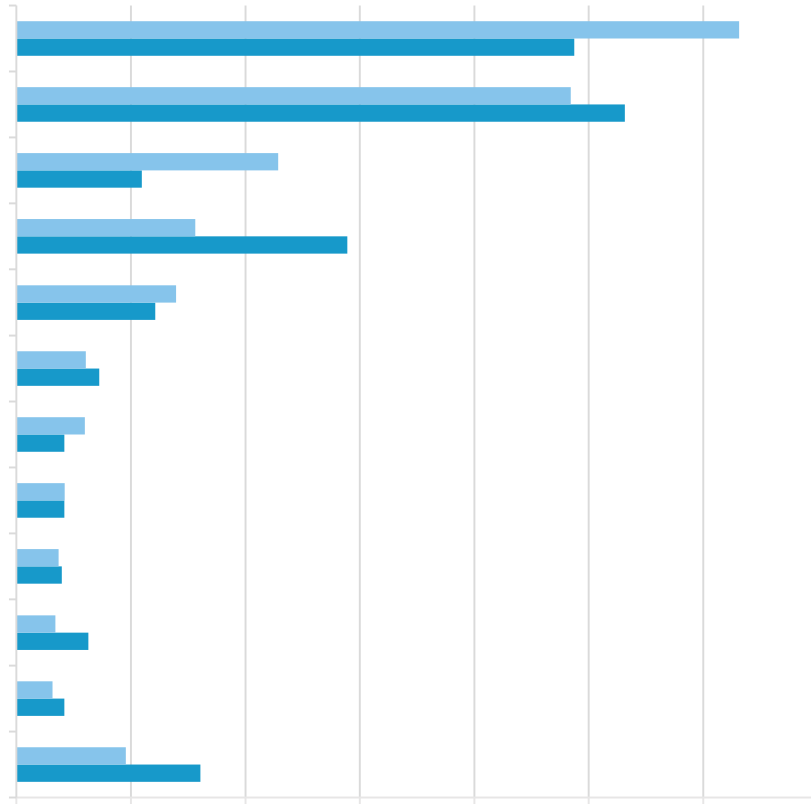
2016 9.26%



7



8



9

2015 9 2016 6
858 26267

91.62%

90%

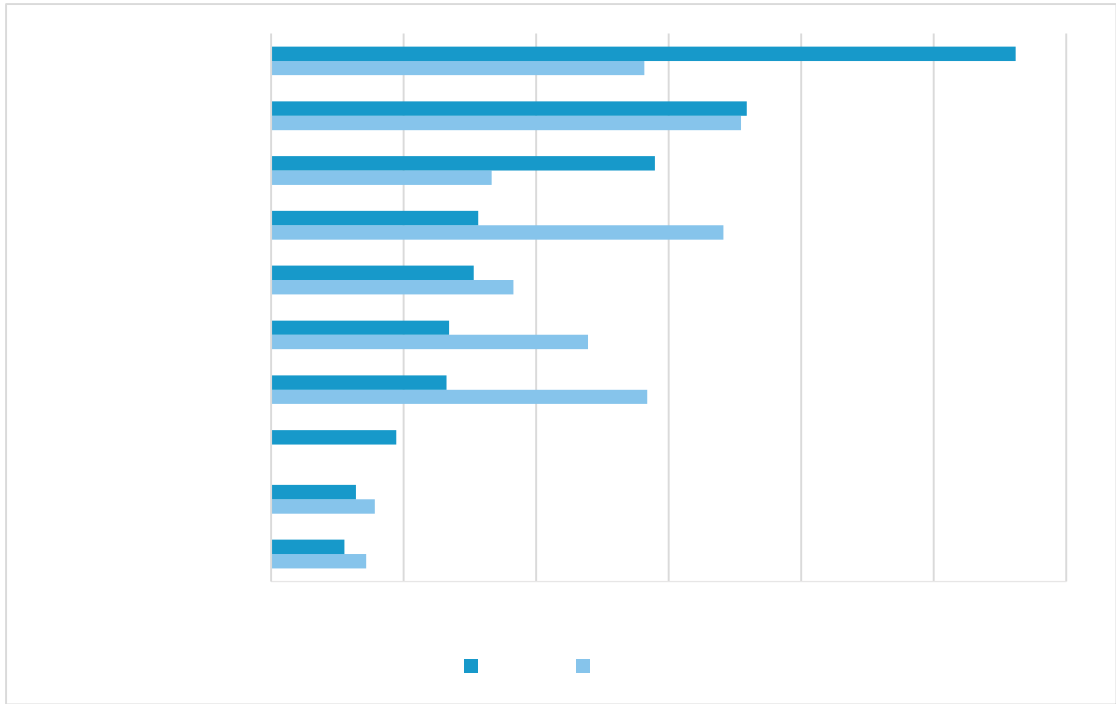
81.98%

“ ” “ ” 28.09%

“ 17.95% “ ” 14.48%

“ 17.73% ” “ ” 17.07%

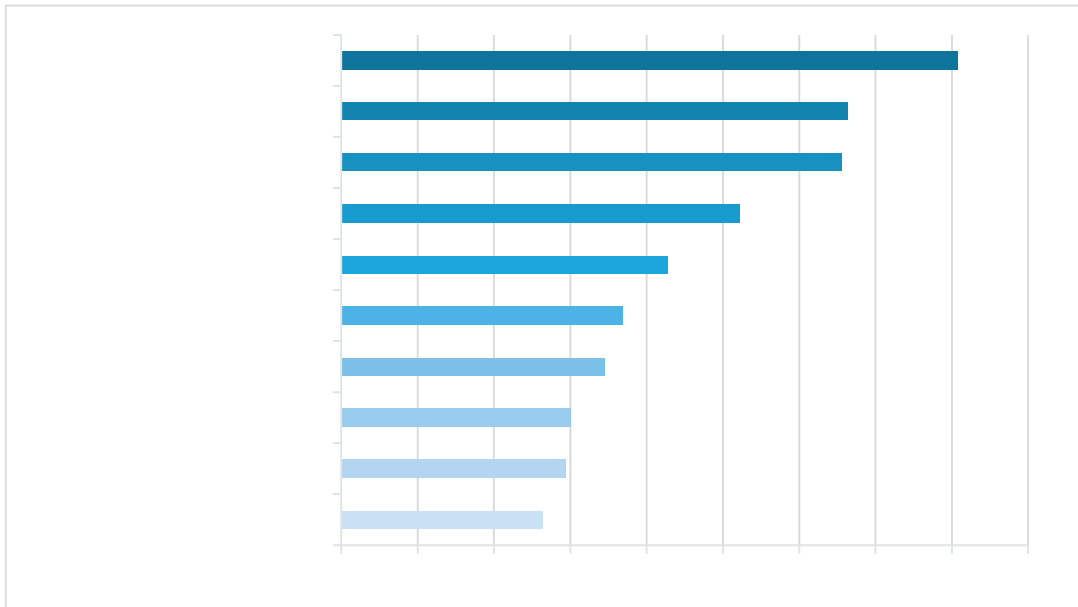
“ ” 14.19%



10

“ ”

“ ” 40.37% “ ” 33.17% “ ”
32.76%

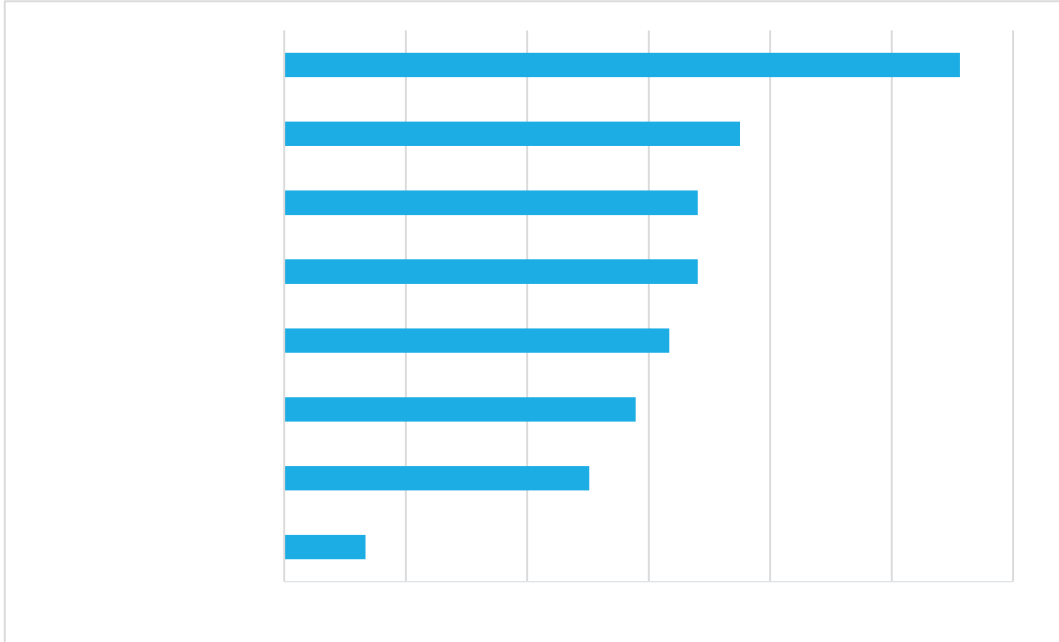


11

“ ” / 55.63%

37.52% 34.04%

34.04%

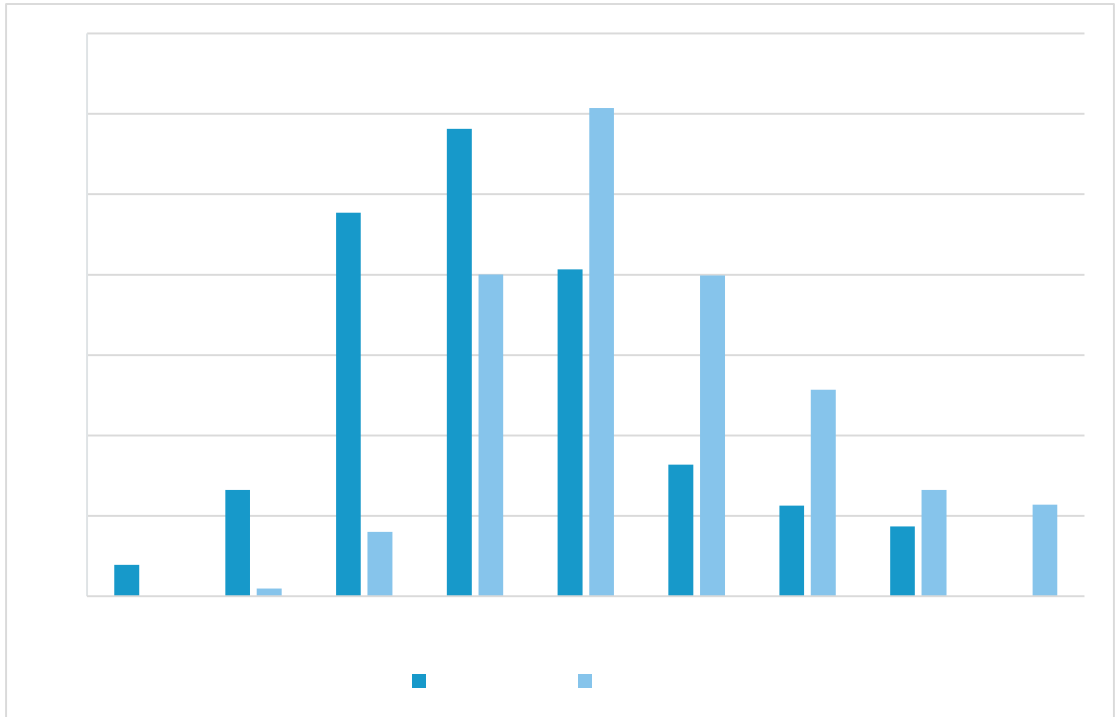


12

:2016

5056 30.37% 4000 4999 19.96%

5000 5999 25.16% 6000

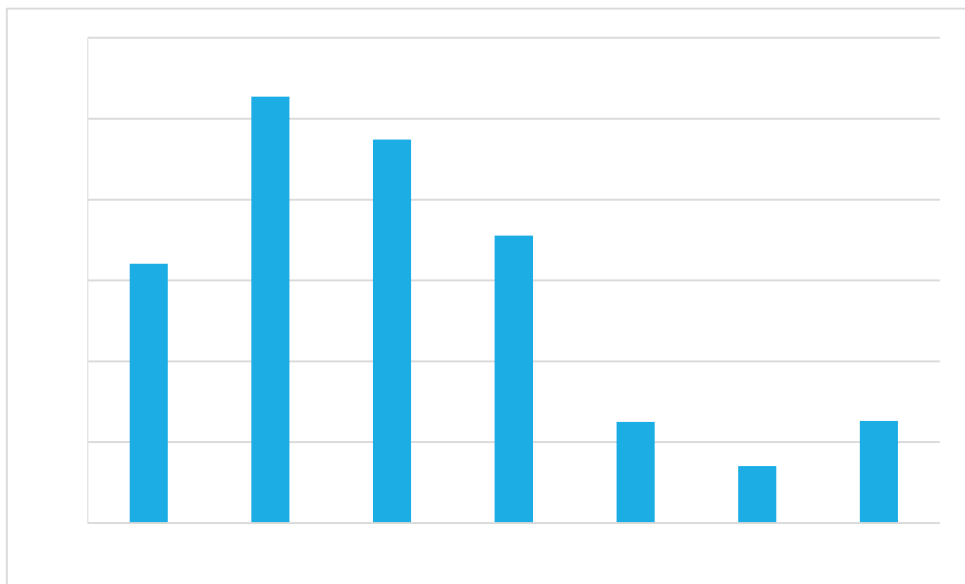


13

2016

6876 50.08% 5 9
 24.03% 9 13 9.84%

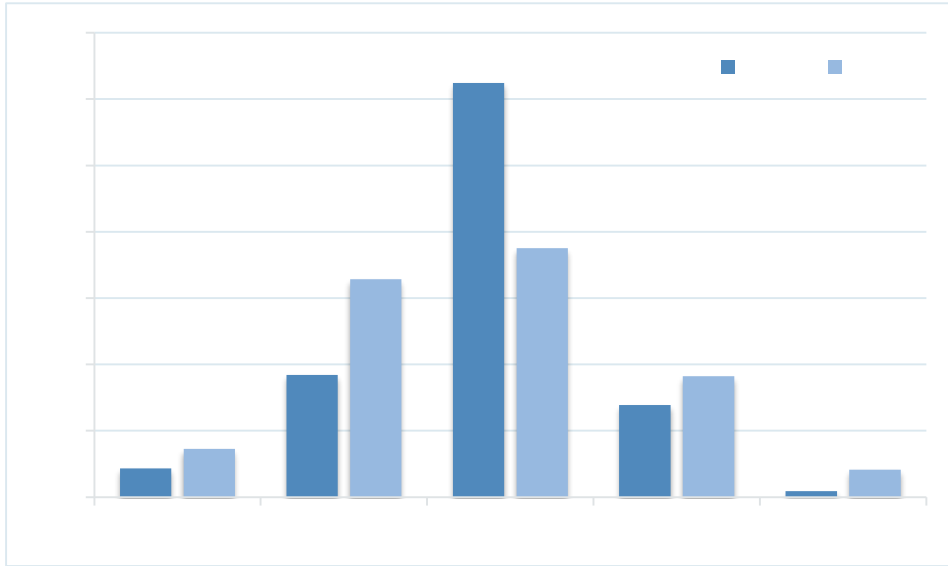
13



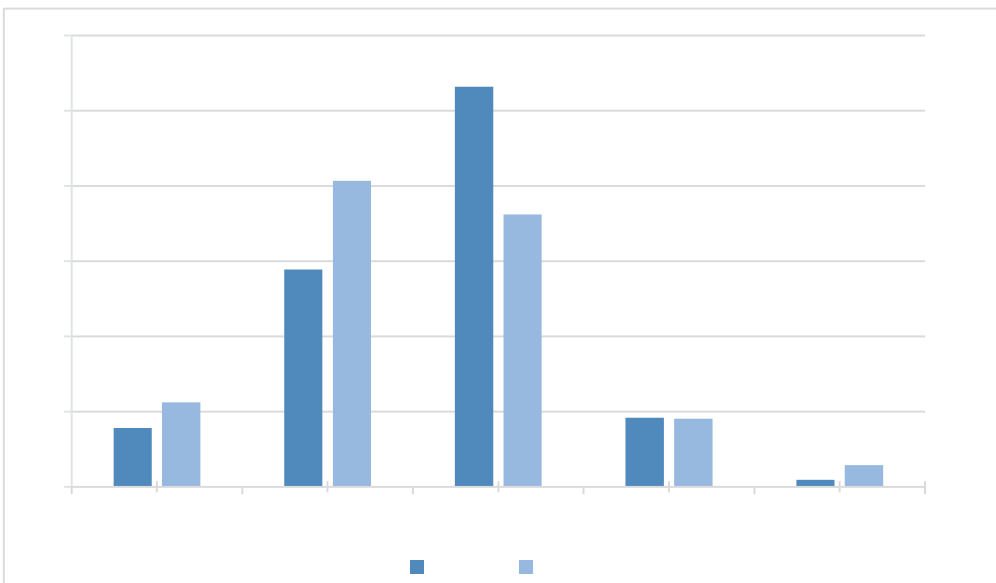
14

85.20%

77.65%



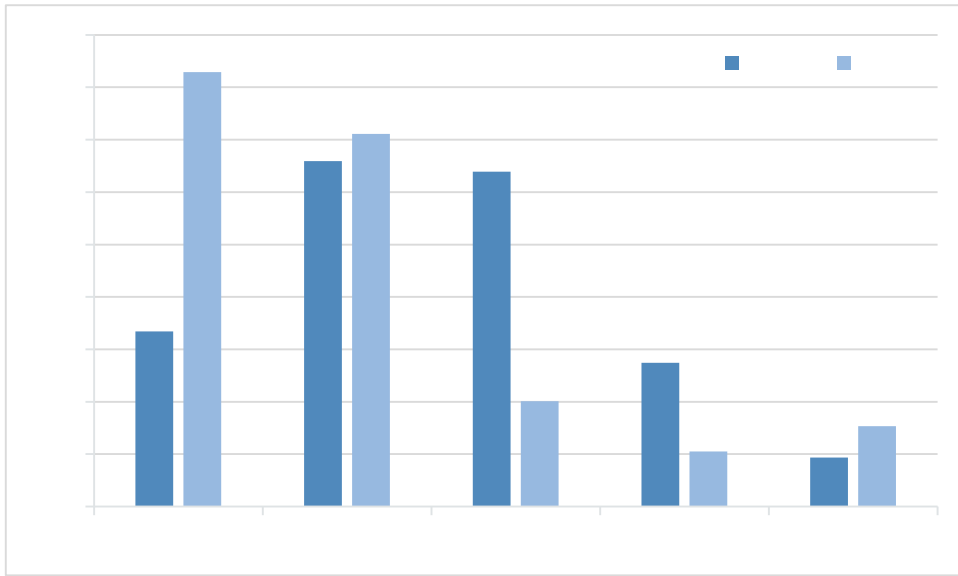
15



16

“ ” 89.92%
88.09%

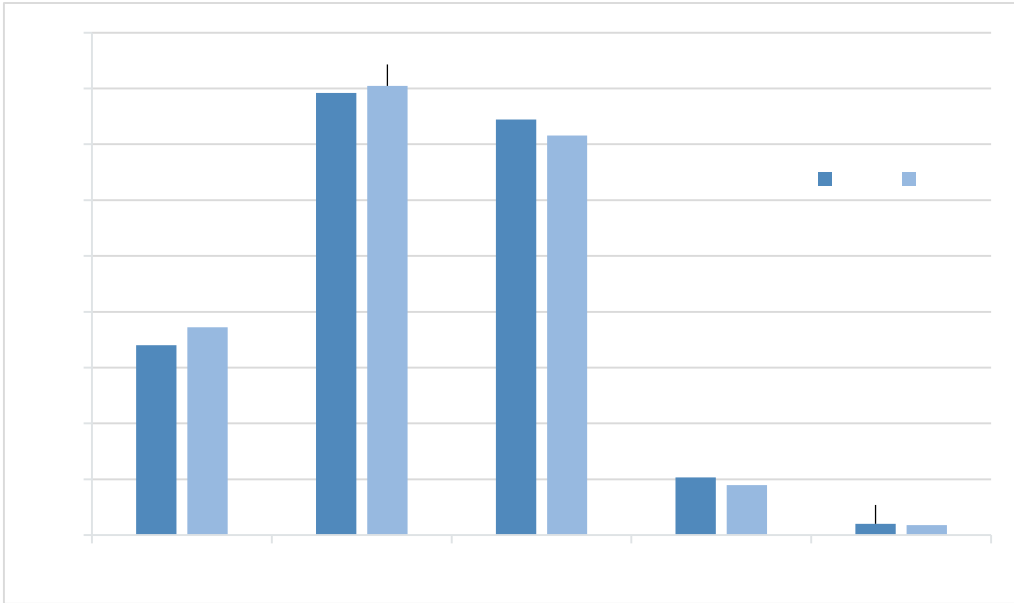
“ ” 81.62%
87.06%



17

“ ” 93.83%

“ ” 94.63%



MOOC

50

25% 20%

2016

343

211

24

29

7

34

3

6

2

1

)

(

MINI

2000

+

+

“

” ”

”

2016

“ ” “ ” “

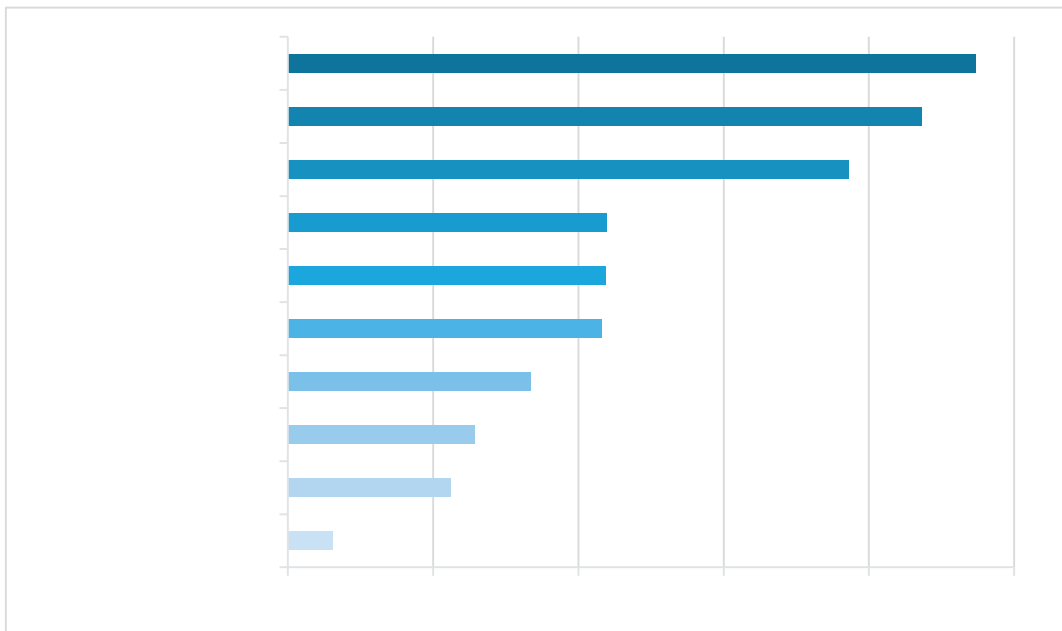
”

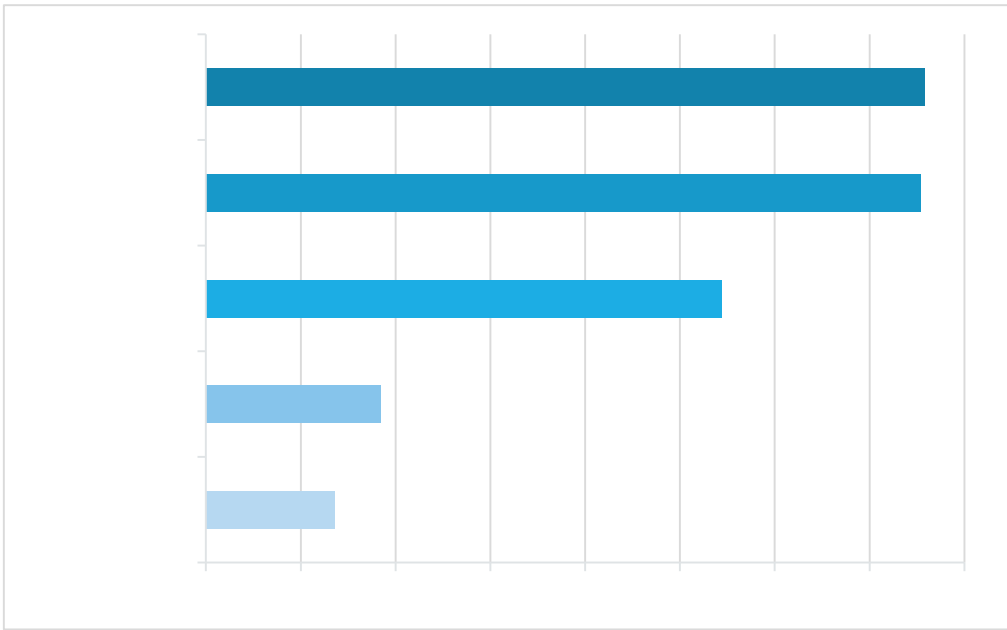
“

” “

” “

”



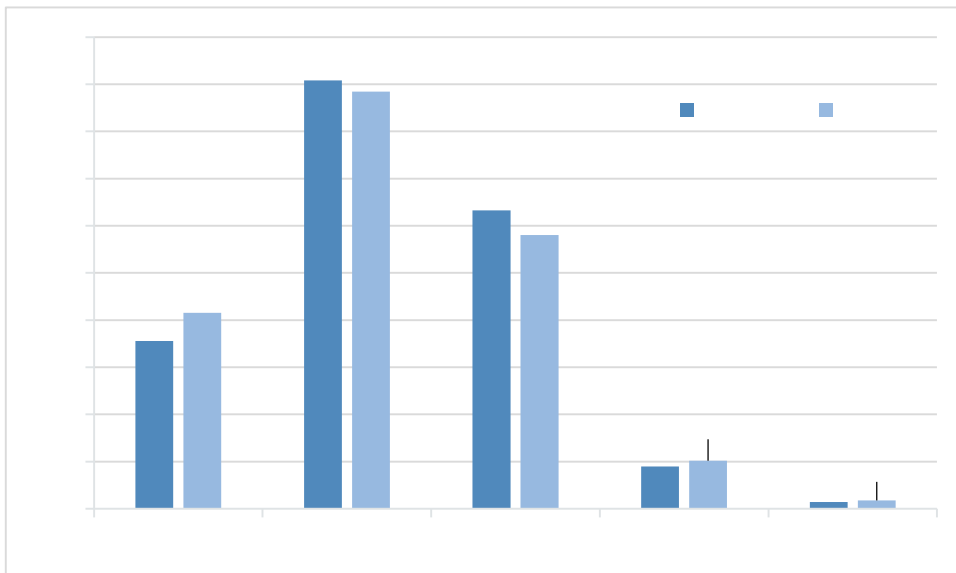


20

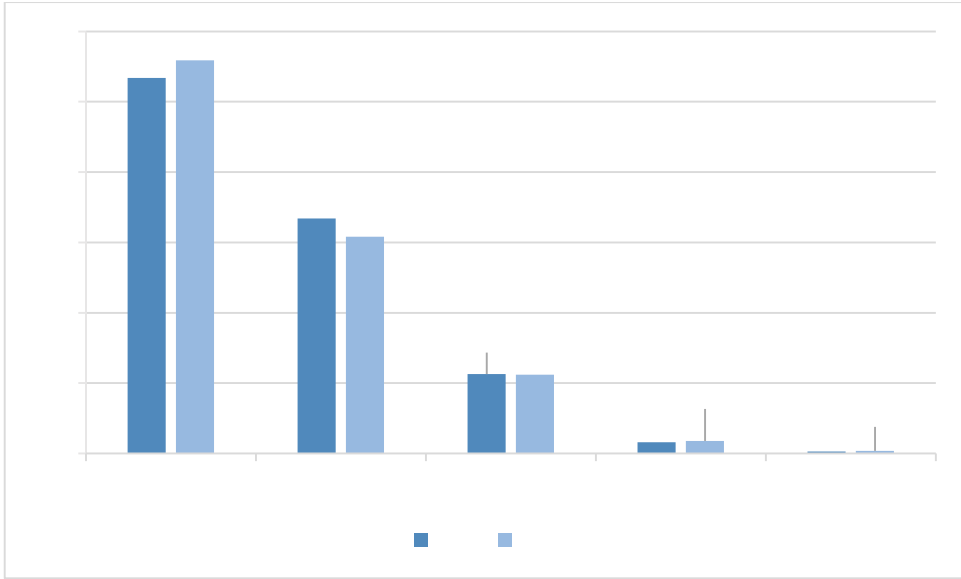
94.82%

94.02%

97.47%



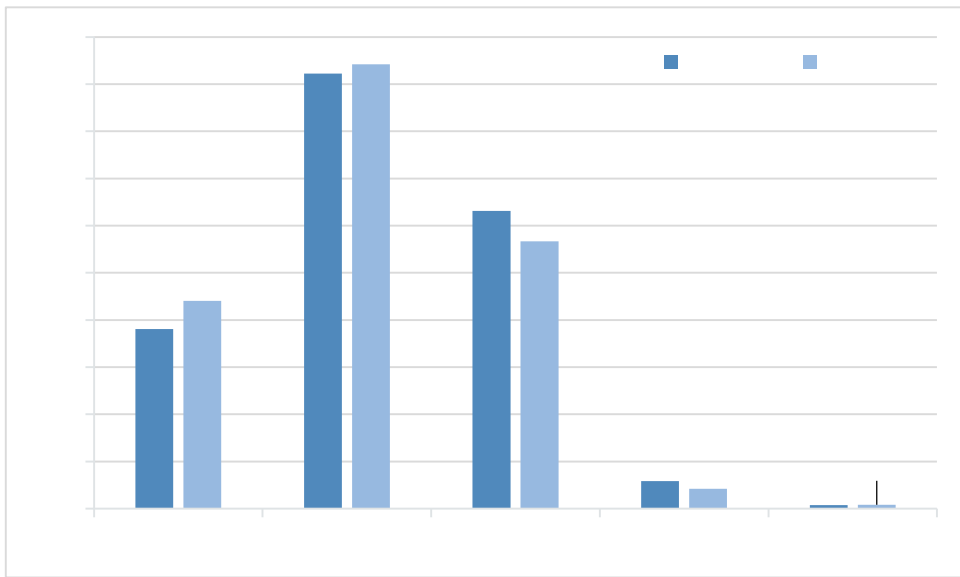
21



22

96.72%

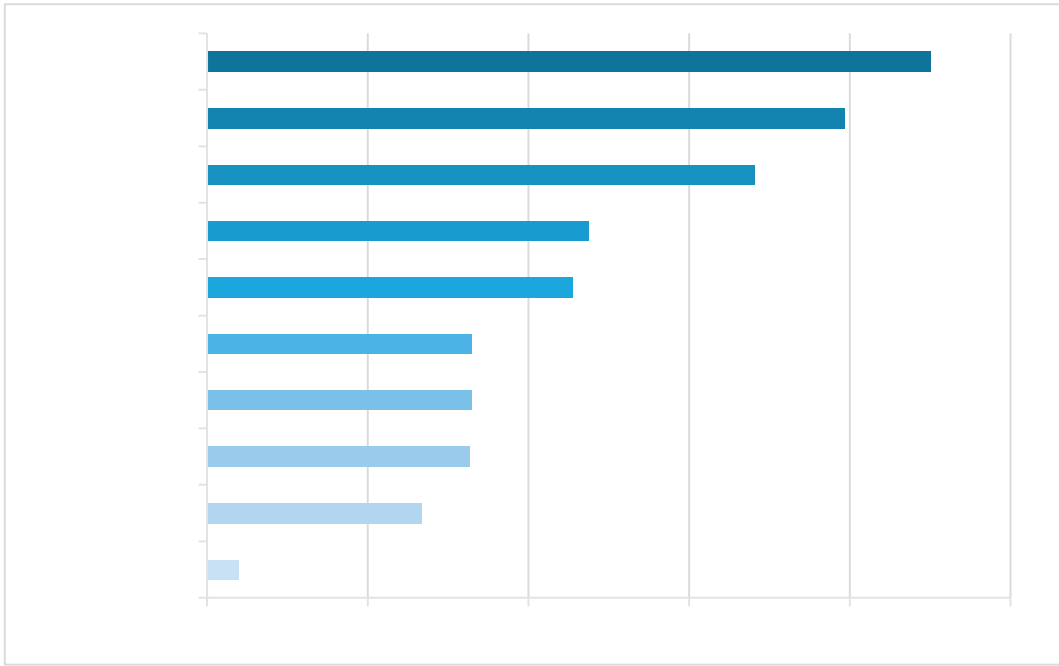
97.47%



23

“ ” “

” “ ”



24

SCANS

35

7

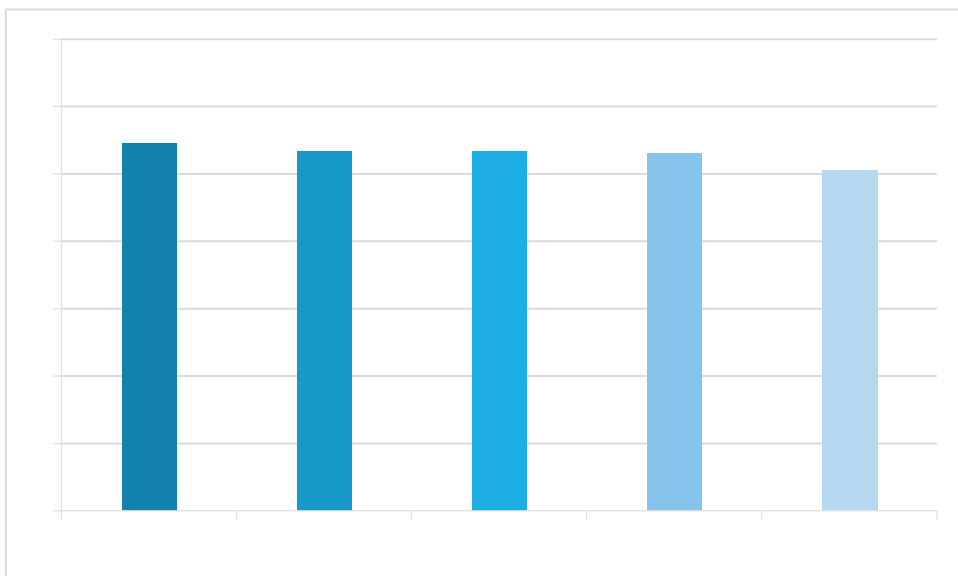
1

“

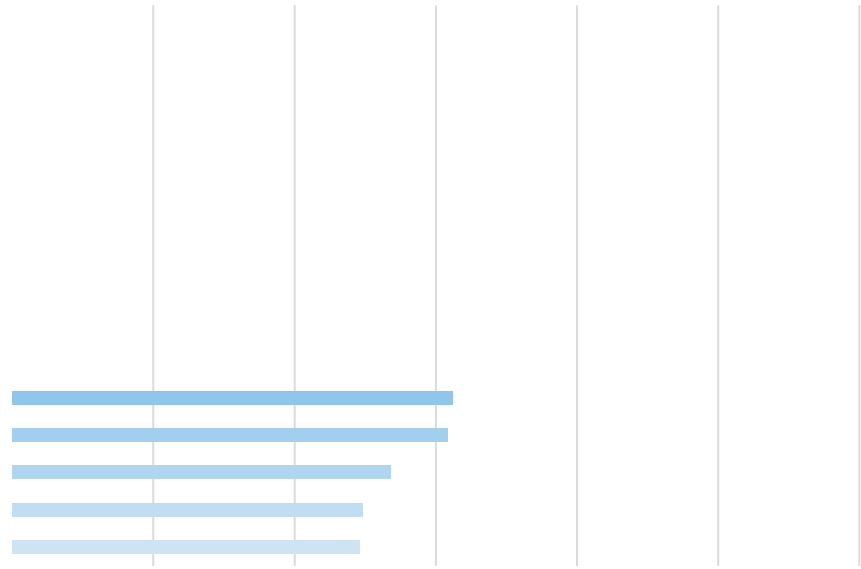
”5.46

“

”5.06



25

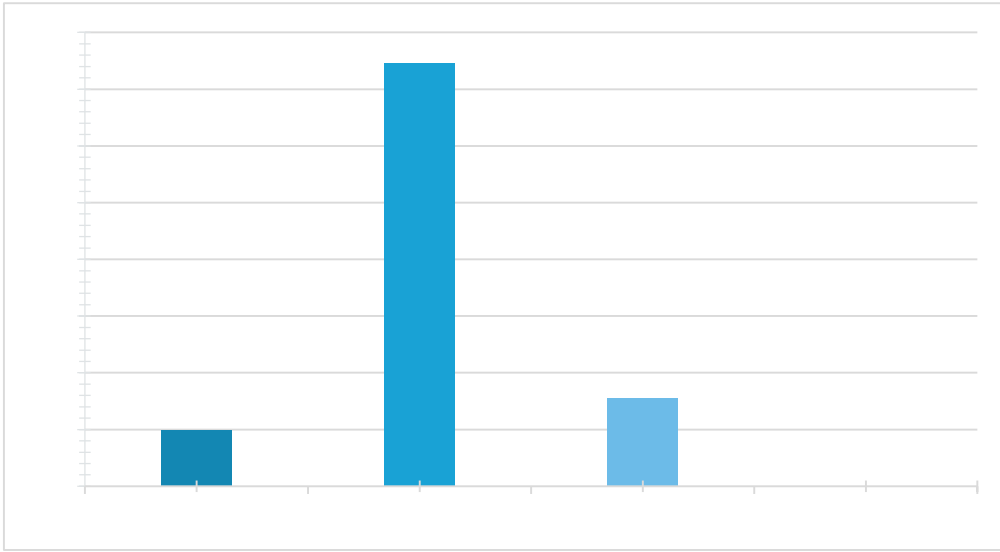


26

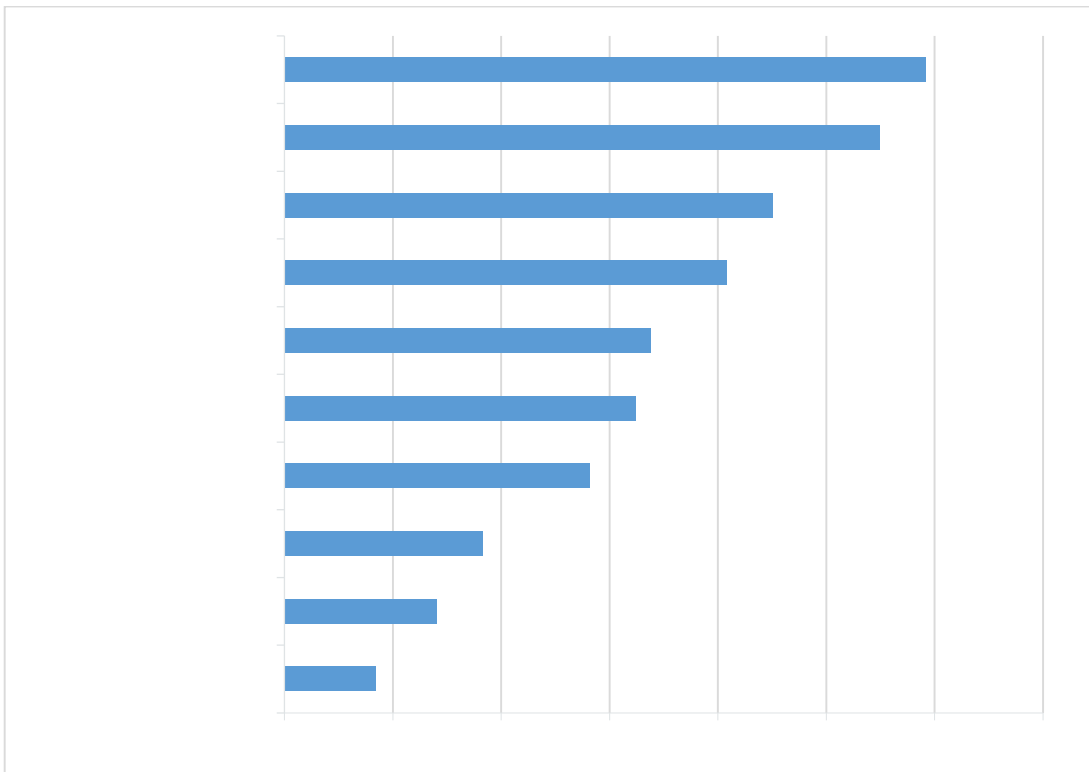
96.84%

7

90%



28



29

